

Document No.: Magic PSP Video Converter

Magic PSP Video Converter

Magic Software.

<http://www.Magic-Video-Software.com>

Pages Order

Getting Started	Pages 3-7
Using Magic PSP Video Converter	Pages 8-12
How to buy Magic PSP Video Converter	Pages 13-14
About Magic Software	Pages 15-16

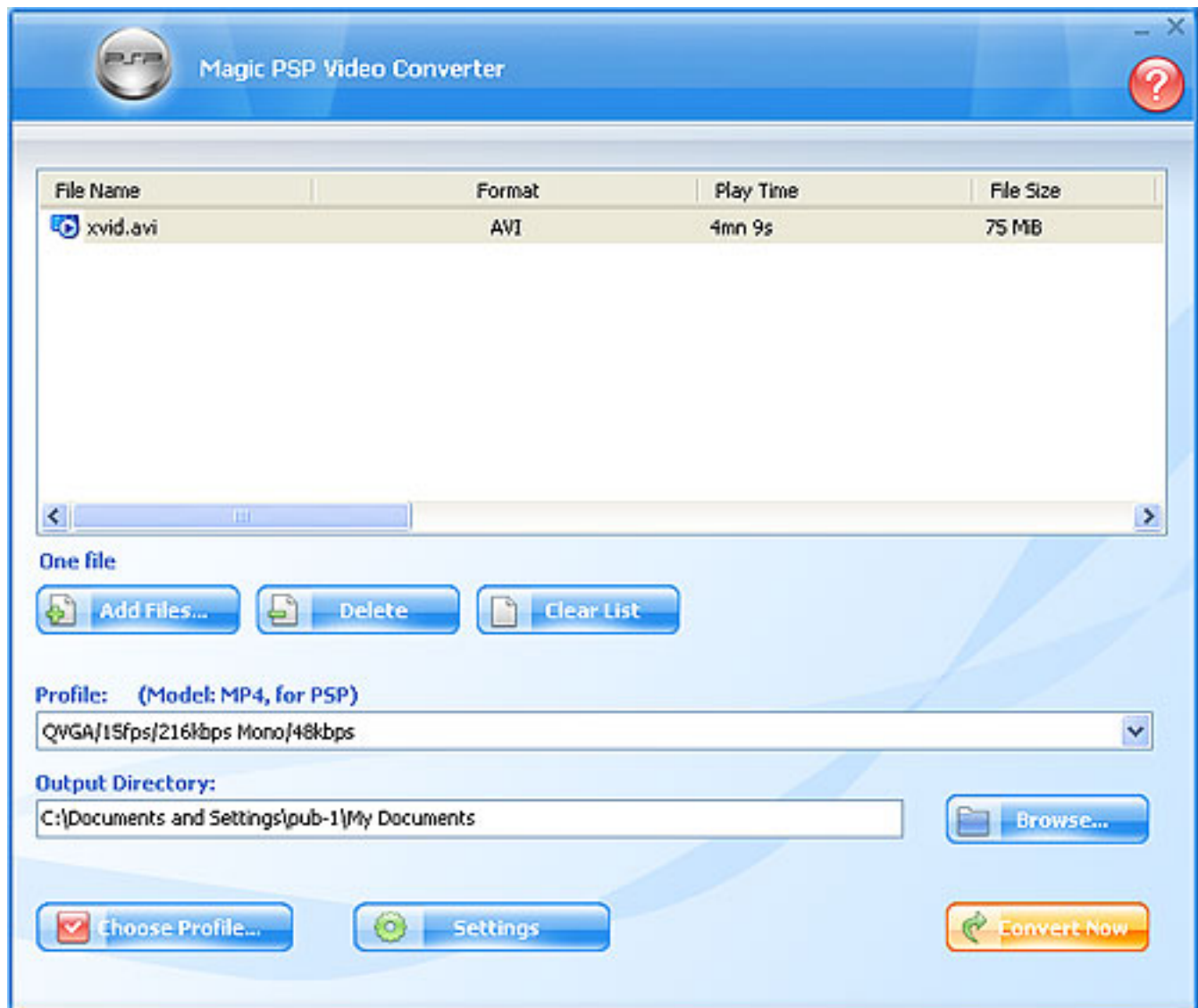
Magic PSP Video Converter

Introduction

Introduction

Magic PSP Video Converter converts video files to popular video playable on Sony PSP. It supports a wide range of popular video formats such as AVI, WMV, MPG, MPEG, ASF, RM, RMVB, MOV, DV, ect. Having integrated top-class MPEG4 encoder, Magic PSP Video Converter converts all supported video files with a few clicks and offers the best output quality.

The intuitive interface makes Magic PSP Video Converter the perfect tool for both new and experienced users. Try it now!



Features

Converts any format to PSP compatible Video.

Converts any format to MP4 to be played on general portable video devices, such as MP4 player.

World's fastest video conversion speed.

User-friendly interface that is easy-to-use.

Transfers video files to PSP directly. No need to install iTunes or other softwares.

Supports batch conversion.

Stunning video and audio quality.

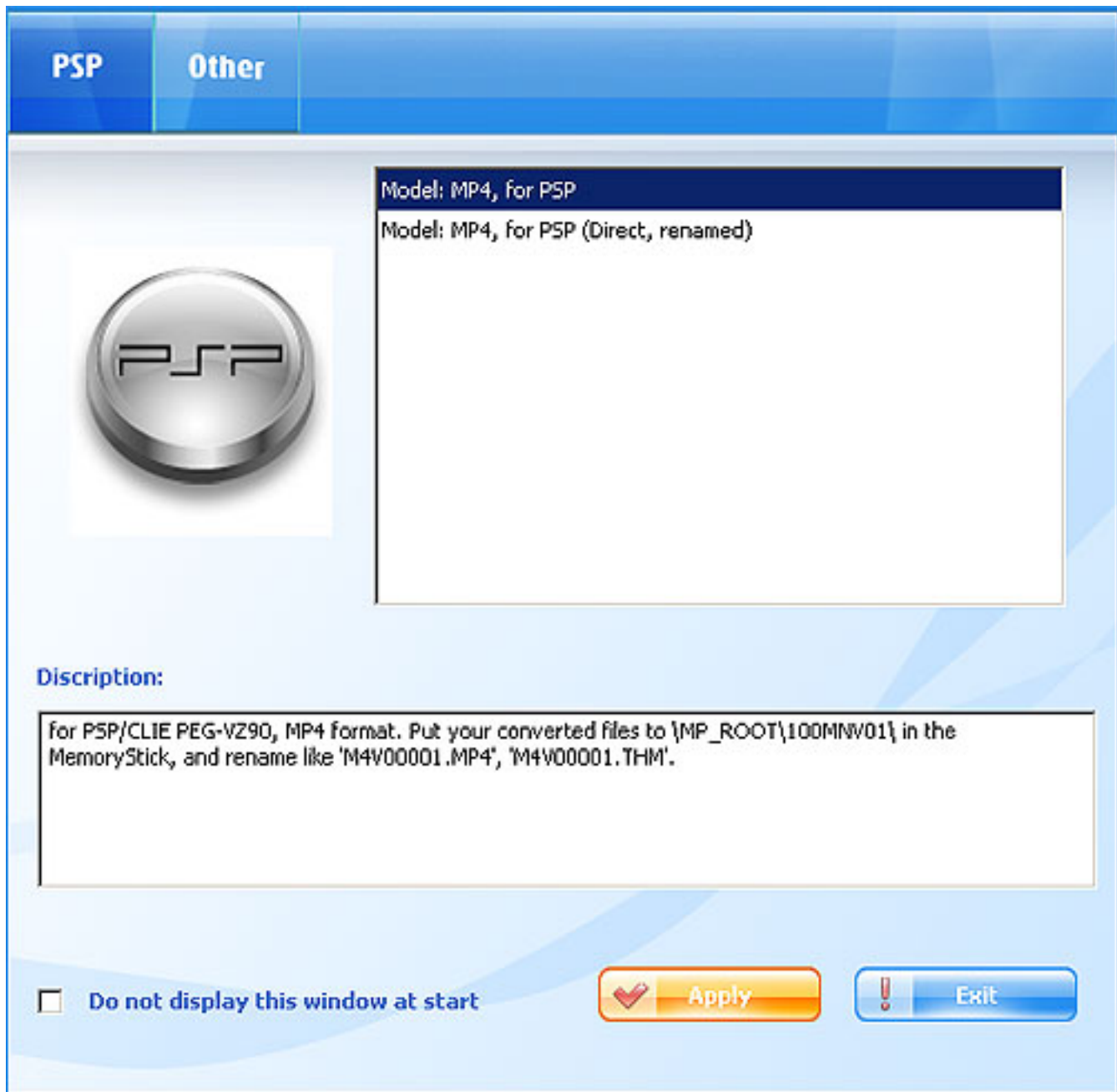
Supports a wide range of video/audio options for MP4 files. For example, video/audio sample rate, bit rate, video size...

Offers the option to automatically shutdown your computer when the conversion has been completed.

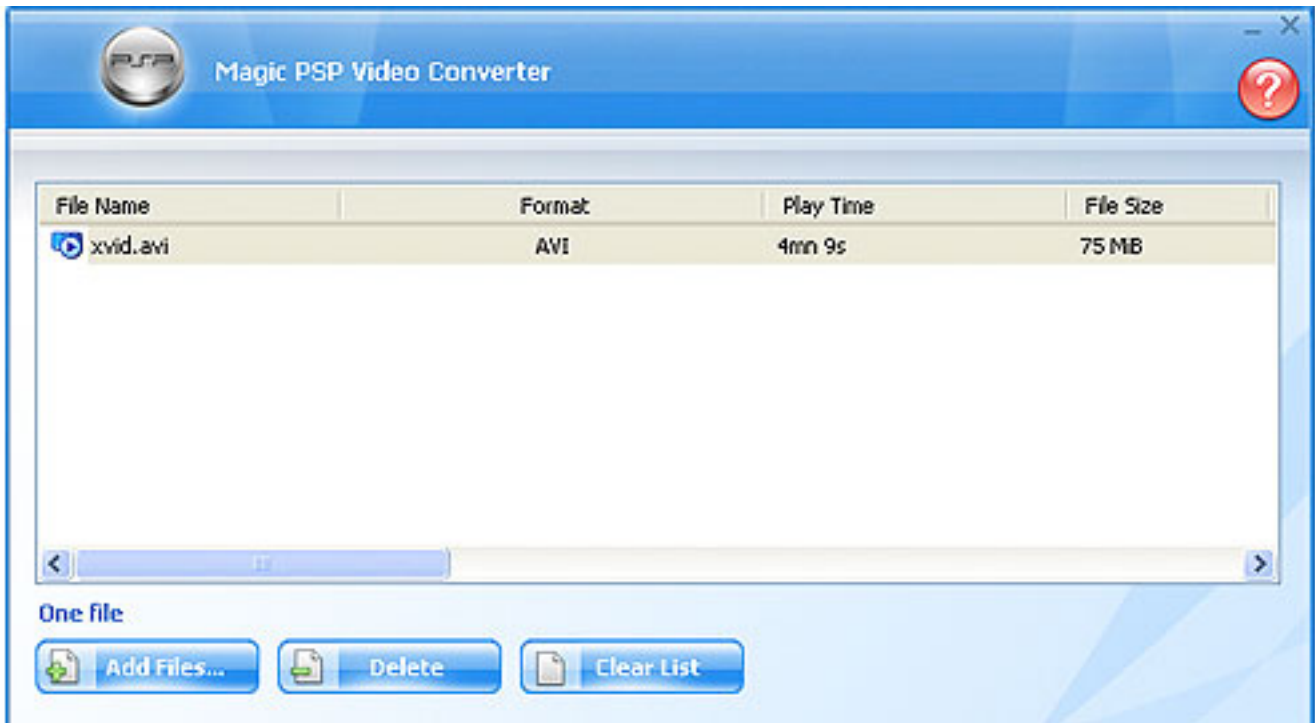
Quick Start

The following instructions should get you converting files in no time!

1. Start the program. Choose the desired format. The Description of the output format will be displayed in the description window.



2. Click the "Add" button to add files. The added files will be listed in the show window. Click "Delete" or "Clear List" to delete files




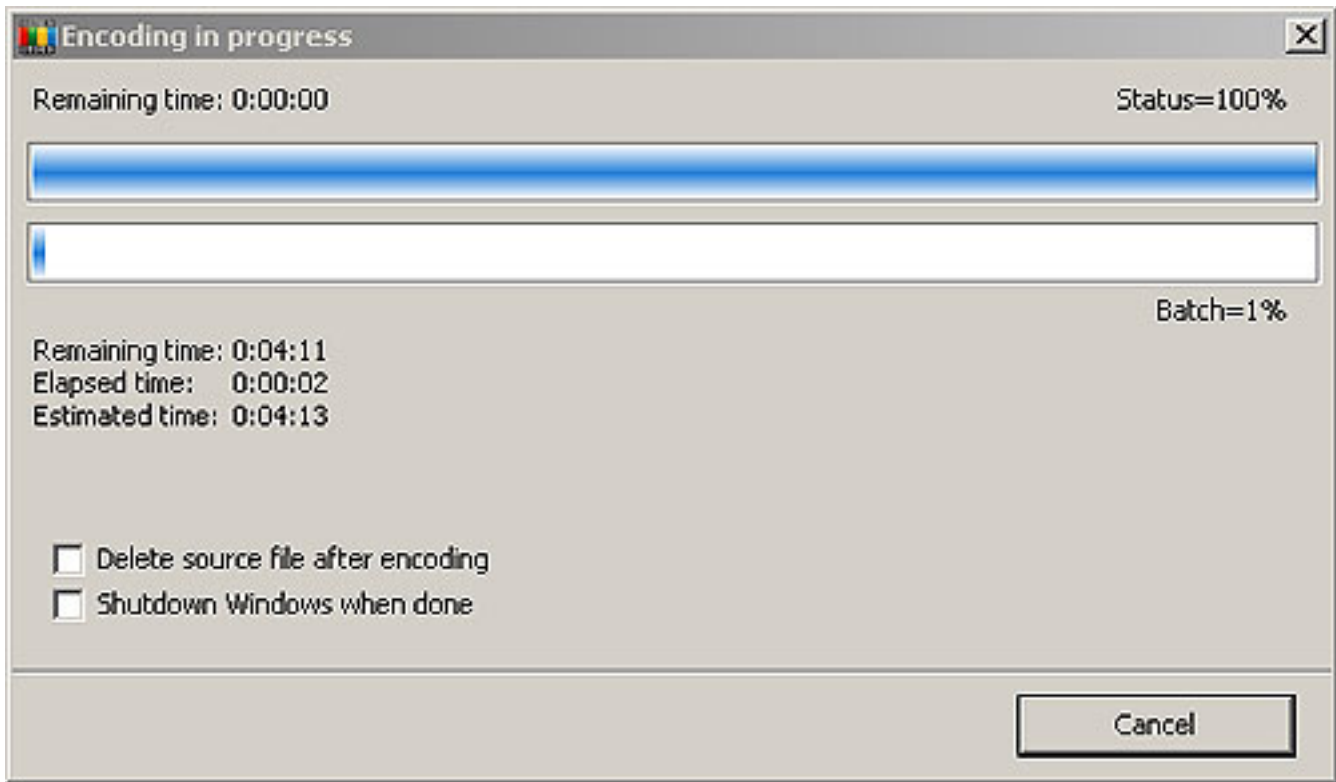
3. Select video/sound parameters in the drop-list menu.



4. Click the "Browse" button to select the output directory.



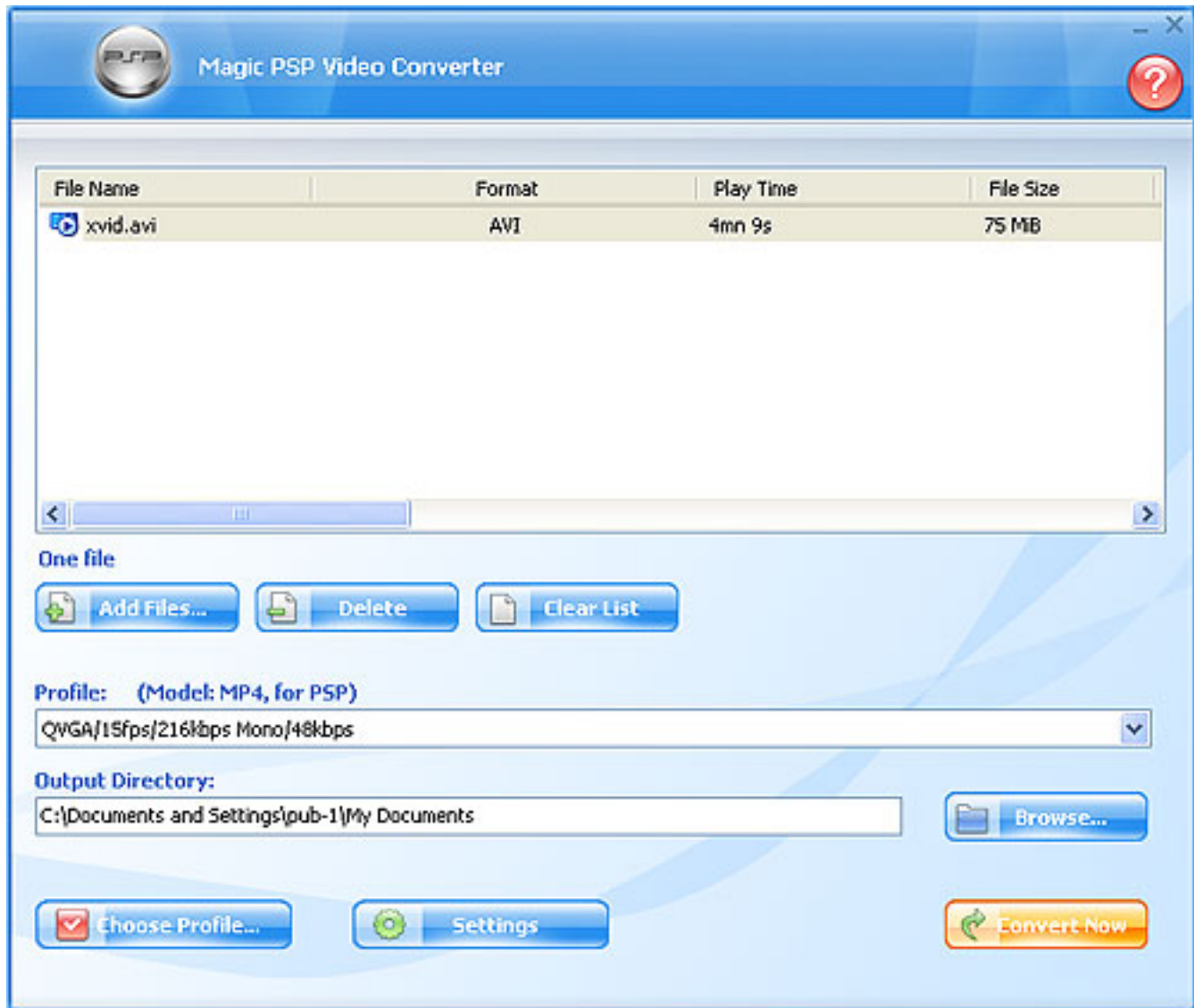
5. Click the  button to convert! The pop-up window will indicate the progress of converting.



Magic PSP Video Converter

The user interface (Overview)

The user interface (Overview)



Add Files: Adds files to the profile Show Window.

Delete: Deletes one file from profile Show Window.

Clear List: Deletes all the files from profile Show Window.

Profile: Shows details of output format, such as Bit rate, mono.

Browse: Selects the output directory.

Choose Profile: Chooses another Profile in the pop up window.


Settings: Selects Thread Priority and DirectShow in the pop up window.

Convert Now: Begins the conversion process.

Question Icon: Other information about this software.

Profile

Choose Profile...

Select a profile from psp or other profiles by clicking the  button in the interface



Menu Window: Select the output model.

Description: Display the details of the selected output model.

Check Box: Click this box to conceal this window.

Apply: Save the selected output format.

Exit: Exit this window.

